

ECS (DDDDK) Affinity-Purified Polyclonal Antibody

ORDERING INFORMATION

Catalog No.	Size
18832	1mg
18832-01	100ug

Format: 1mg/ml in Phosphate Buffered Saline (PBS), 0.09% sodium azide.

BACKGROUND

Enterokinase, also known as enteropeptidase, is a serine protease that catalyzes the hydrolysis of peptide bonds in proteins but, unlike other kinases, does not catalyze transfer of phosphate groups. Enterokinase cleaves proteins following a lysine at an enterokinase cleavage site, or ECS (Asp-Asp-Asp-Asp-Lys). *In vivo*, this cleavage results in trypsin-dependent activation of other pancreatic zymogens, such as chymotrypsinogen, proelastase, procarboxypeptidase and prolipase in the lumen of the gut.

SPECIFICATION SUMMARY

Antigen: DDDDK conjugated to KLH.

Host Species: Rabbit

Specificity: Antibody was affinity-purified on the peptide.

APPLICATIONS

Immunoblotting: use at a dilution of 1:1,000-1:20,000.

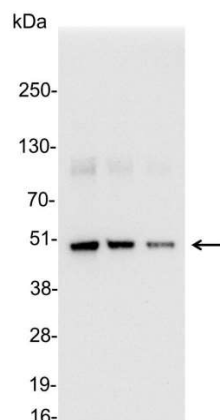
Immunocytochemistry: use at a dilution of 1:100-1:400.

Immunoprecipitation: use 1-4ug/mg lysate.

ELISA: for detection use at a dilution of 1:1,000-1:30,000; for coating use at a dilution of 1:100-1:500.

These are recommended dilutions.

Endusers should determine optimal dilutions for their applications.



Detection of ECS-tagged protein in 200, 100, and 50ng of *E. coli* lysate containing tagged fusion protein with #18832 diluted 1:25,000.

DILUTION INSTRUCTIONS

Dilute in PBS or medium that is identical to that used in the assay system.

STORAGE AND STABILITY

This antibody is stable for at least one (1) year at 2-8°C.

For in vitro investigational use only. Not for use in therapeutic or diagnostic procedures.