

c-myc Affinity-Purified Polyclonal Antibody

ORDERING INFORMATION

Catalog No.	Size
18826	1mg
18826-01	100ug

Format: 1mg/ml in Phosphate Buffered Saline, pH 7.2, 0.09% sodium azide.

BACKGROUND

c-myc is an epitope tag often constructed on the N- or C-terminus of a protein to allow for detection and analysis of the protein. The peptide sequence of the myc tag is EQKLISEEDL (Glu-Gln-Lys-Leu-Ile-Ser-Glu-Glu-Asp-Leu). The c-myc tag is approximately 1202 Daltons in atomic mass and includes 10 amino acids.

SPECIFICATION SUMMARY

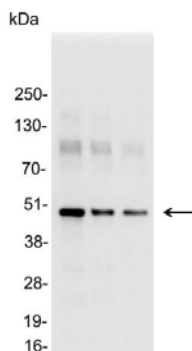
Antigen: Amino acids 410-419 (EQKLISEEDL) of human myc conjugated to KLH.

Host Species: Rabbit

Specificity: Antibody was affinity-purified on the peptide.

APPLICATIONS

Immunoblotting: use at a dilution of 1:1,000-1:25,000.

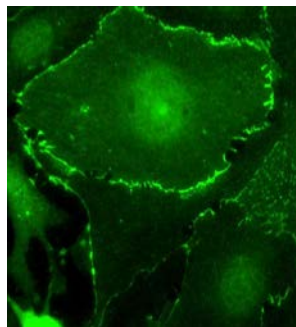


Detection of c-myc-tagged protein in 200, 200, or 50ng of E. coli lysate containing tagged fusion protein with #18826 diluted 1:25,000.

Immunocytochemistry: use at a dilution of 1:100-1:400.

Immunofluorescence: use at a dilution of 1:100-1:400.

ELISA: for detection use at a dilution of 1:1,000-1:30,000; for coating use at a dilution of 1:100-1:500.



Detection of c-myc-tagged plakoglobin (gamma-catenin) on transiently transfected human microvascular endothelial cells with #18826 at 1ug/ml.

These are recommended dilutions. Endusers should determine optimal dilutions for their applications.

DILUTION INSTRUCTIONS

Dilute in PBS or medium that is identical to that used in the assay system.

STORAGE AND STABILITY

This antibody is stable for at least one (1) year at 2-8°C.

For in vitro investigational use only. Not for use in therapeutic or diagnostic procedures.