

## c-myc Affinity-Purified Polyclonal Antibody

### ORDERING INFORMATION

Catalog No.	Size
18824	1mg
18824-01	100ug

**Format:** 1mg/ml in Phosphate Buffered Saline, pH 7.2, 0.09% sodium azide.

### BACKGROUND

c-myc is an epitope tag often constructed on the N- or C-terminus of a protein to allow for detection and analysis of the protein. The peptide sequence of the myc tag is EQKLISEEDL (Glu-Gln-Lys-Leu-Ile-Ser-Glu-Glu-Asp-Leu). The c-myc tag is approximately 1202 Daltons in atomic mass and includes 10 amino acids.

### SPECIFICATION SUMMARY

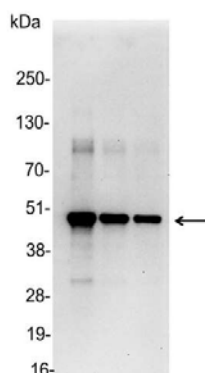
**Antigen:** Amino acids 410-419 (EQKLISEEDL) of human myc conjugated to KLH.

**Host Species:** Goat

**Specificity:** Antibody was affinity-purified on the peptide.

### APPLICATIONS

**Immunoblotting:** use at a dilution of 1:1,000-1:20,000.



Detection of c-myc-tagged protein in 200, 100, and 50ng of E. coli lysate containing tagged fusion protein with #18824 diluted 1:25,000.

**Immunocytochemistry:** use at a dilution of 1:100-1:400.

**ELISA:** for detection use at a dilution of 1:1,000-1:30,000; for coating use at a dilution of 1:100-1:500.

**Immunoprecipitation:** use at 1-4ug/mg lysate.

These are recommended dilutions. Endusers should determine optimal dilutions for their applications.

### DILUTION INSTRUCTIONS

Dilute in PBS or medium that is identical to that used in the assay system.

### STORAGE AND STABILITY

This antibody is stable for at least one (1) year at 2-8°C.

*For in vitro investigational use only. Not for use in therapeutic or diagnostic procedures.*