

AU1 Affinity-Purified Polyclonal Antibody

ORDERING INFORMATION

| Catalog No. | Size |
|-------------|-------|
| 18816 | 1mg |
| 18816-01 | 100ug |

Format: 1mg/ml in Phosphate-Buffered Saline (PBS), pH 7.2, 0.09% sodium azide.

BACKGROUND

AU1 is an epitope tag often constructed on the N- or C- terminus of a protein to allow for detection and analysis of the protein. The AU1 sequence represents the amino acid sequence DTYRYI derived from the major capsid protein of bovine papillomavirus-1 (BPV-1).

SPECIFICATION SUMMARY

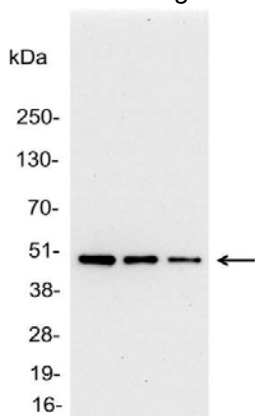
Antigen: AU1 (DTYRYI) conjugated to KLH.

Host Species: Goat

Specificity: Antibody was affinity-purified on the peptide.

APPLICATIONS

Immunoblotting: use at a dilution of 1:1,000-1:20,000.



Detection of AU1-tagged protein in 200, 100, and 50ng of E. coli lysate containing tagged fusion protein with #18816 diluted 1:5,000.

ELISA: for detection, use at a dilution of 1:1,000-1:30,000; for coating use at 1:100-1:500.

Immunocytochemistry: use at a dilution of 1:100-1:400.

Immunoprecipitation: use at 1-4ug/mg lysate.

These are recommended dilutions. Endusers should determine optimal dilutions for their applications.

DILUTION INSTRUCTIONS

Dilute in PBS or medium that is identical to that used in the assay system.

STORAGE AND STABILITY

This antibody is stable for at least one (1) year at 2-8°C.

For in vitro investigational use only. Not for use in therapeutic or diagnostic procedures.