

6-His Affinity-Purified Polyclonal Antibody

ORDERING INFORMATION

Catalog No.	Size
18814	1mg
18814-01	100ug

Format: 1mg/ml in Phosphate-Buffered Saline (PBS), pH 7.2, 0.09% sodium azide.

BACKGROUND

A polyhistidine-tag consists of at least six histidine (*His*) residues, often at the N- or C-terminus of a protein. Polyhistidine-tags are often used for affinity purification of polyhistidine-tagged recombinant proteins expressed in *Escherichia coli* and other prokaryotic expression systems.

SPECIFICATION SUMMARY

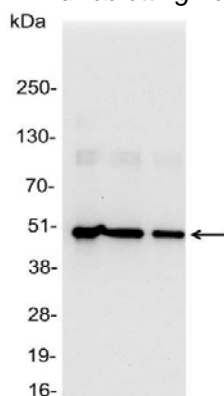
Antigen: 6-His (HHHHHH) conjugated to KLH.

Host Species: Rabbit

Specificity: Antibody was affinity-purified on the peptide. This antibody does not recognize all N-terminal 6-His tagged proteins.

APPLICATIONS

Immunoblotting: use at a dilution of 1:1,000-1:20,000.



Detection of 6-His tagged protein in 200, 100, and 50ng of *E. coli* lysate containing tagged fusion protein with #18814 diluted 1:25,000.

ELISA: for detection, use at a dilution of 1:1,000-1:30,000; for coating, use at a dilution of 1:100-1:500.

Immunocytochemistry: use at a dilution of 1:100-1:400.

Immunoprecipitation: use at 1-4ug/mg lysate.

These are recommended dilutions. Endusers should determine optimal dilutions for their applications.

DILUTION INSTRUCTIONS

Dilute in PBS or medium that is identical to that used in the assay system.

STORAGE AND STABILITY

This antibody is stable for at least one (1) year at 2-8°C.

For in vitro investigational use only. Not for use in therapeutic or diagnostic procedures.