

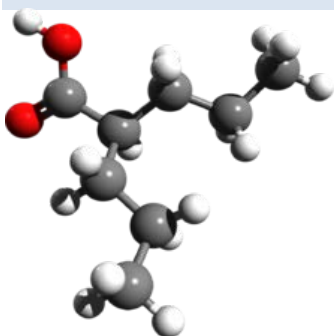
Valproic Acid Monoclonal Antibodies

ORDERING INFORMATION

Catalog No.	Clone No.	MAb Subtype	Size	Library Pack No.	100ug/clone
16801	VP10-115.2	IgG1	100ug, 500ug	168101	All 5 clones
16802	VP10-201.7	IgG1	100ug, 500ug		
16803	VP10-234.5	IgG1	100ug, 500ug		
16805	VP13-615.3	IgG1	100ug, 500ug		
16806	VP13-607.1.D5	IgG1	100ug, 500ug		

Format: Protein G-purified antibody in PBS, pH 7.4.

BACKGROUND



Valproic acid is primarily used to treat epilepsy and bipolar disorder and to prevent migraine headaches. It has recently been shown to protect against a seizure-induced reduction in phosphatidylinositol (3,4,5)-trisphosphate (PIP3) as a potential therapeutic mechanism. In addition, its anticonvulsant effect has been attributed to the blockade of voltage-dependent sodium channels and increased brain levels of gamma-aminobutyric acid (GABA). Valproic acid was first made in 1881 and came into medical use in 1962. It is on the World Health Organization's List of Essential Medicines.

SPECIFICATION SUMMARY

Antigen: Valproic acid conjugated to KLH.

Host Species: Mouse

Specificity: These antibodies recognize valproic acid.

APPLICATIONS

These antibodies have been qualified for use in ELISA to detect valproic acid.

DILUTION INSTRUCTIONS

Dilute in PBS or medium that is identical to that used in the assay system.

STORAGE AND STABILITY

These antibodies are stable for at least one (1) year at -20°C to -70°C . Store product in appropriate aliquots to avoid multiple freeze-thaw cycles.

For in vitro investigational use only. Not for use in therapeutic or diagnostic procedures.