

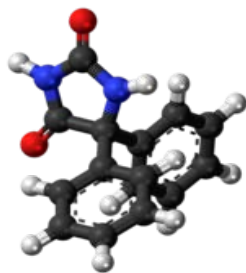
Phenytoin Monoclonal Antibodies

ORDERING INFORMATION

Catalog No.	Clone No.	MAb Subtype	Size	Library Pack No.	100ug/clone
16301	PY23-302.1	IgG1	100ug, 500ug	163101	All 5 clones
16302	PY24-404.1	IgG1	100ug, 500ug		
16303	PY24-413.1	IgG1	100ug, 500ug		
16304	PY25-500.1	IgG1	100ug, 500ug		
16305	PY25-512.4	IgG1	100ug, 500ug		

Format: Protein G-purified antibody in PBS, pH 7.4.

BACKGROUND



Phenytoin is an anti-seizure medication. It may also be used for certain heart arrhythmias or neuropathic pain. Phenytoin is on the World Health Organization's List of Essential Medicines.

SPECIFICATION SUMMARY

Antigen: Phenytoin conjugated to KLH.

Host Species: Mouse

Specificity: These antibodies recognize phenytoin and vary in their degree of cross-reactivity with 5-(hydroxyphenyl)-5-phenylhydantoin.

% Cross-Reactivity with 5-(hydroxyphenyl)-5-phenylhydantoin

16301	160.0
16302	1.6
16303	55.7
16304	128.0
16305	28.9

APPLICATIONS

These antibodies have been qualified for use in ELISA to detect phenytoin.

DILUTION INSTRUCTIONS

Dilute in PBS or medium that is identical to that used in the assay system.

STORAGE AND STABILITY

These antibodies are stable for at least one (1) year at -20°C to -70°C. Store product in appropriate aliquots to avoid multiple freeze-thaw cycles.

For in vitro investigational use only. Not for use in therapeutic or diagnostic procedures.