

## Entamoeba histolytica Monoclonal Antibodies

### ORDERING INFORMATION

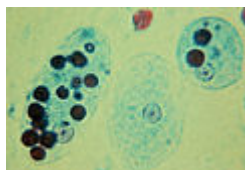
Catalog No.	Clone No.	MAb Subtype	Size	Library Pack No.	100ug/clone
15000	EH34.5	IgG1*	100ug, 500ug	150101	All 5 clones
15001	EH123.5	IgG1*	100ug, 500ug		
15010	EH147.5	IgM**	100ug, 500ug		
15020	EH304.6	IgG3**	100ug, 500ug		
15030	EH357.8	IgM**	100ug, 500ug		

**Format:** \*Protein G-purified antibody in PBS, pH 7.4

\*\*PEG-purified antibody in PBS, pH 7.4

### BACKGROUND

*Entamoeba histolytica* is an anaerobic parasitic protozoan that predominantly infects humans and other primates causing amoebiasis. In the vast majority of cases, infection is asymptomatic and the carrier is unaware they are infected. However, in an estimated 10% of cases *E. histolytica* causes disease. Once the trophozoites are excysted they colonize the large bowel, remaining on the surface of the mucus layer and feeding on bacteria and food particles. Occasionally, and in response to unknown stimuli, trophozoites move through the mucus layer where they come in contact with the epithelial cell layer and start the pathological process.



Trophozoites of *Entamoeba histolytica* with ingested erythrocytes



Immature *Entamoeba histolytica* cyst

### SPECIFICATION SUMMARY

**Antigen:** *Entamoeba histolytica* HK-9.

**Host Species:** Mouse

**Specificity:** These antibodies recognize *Entamoeba histolytica* trophozoites and cysts.

### APPLICATIONS

These antibodies have been qualified for use in ELISA to detect *E. histolytica* trophozoites and cysts. Endusers should determine optimal concentrations for their applications.

### DILUTION INSTRUCTIONS

Dilute in PBS or medium that is identical to that used in the assay system.

### STORAGE AND STABILITY

These antibodies are stable for at least one (1) year at -20° to -70°C. Store product in appropriate aliquots to avoid multiple freeze-thaw cycles.

*For in vitro investigational use only. Not intended for use in therapeutic or diagnostic procedures.*