

Aurora A Polyclonal Antibody

ORDERING INFORMATION

Catalog No.: 13042

Format: 100ug antigen-affinity purified IgG in Tris-citrate/phosphate buffer, pH 7-8, 0.09% sodium azide.

BACKGROUND

Aurora kinase A, also known as serine/threonine-protein kinase 6, is an enzyme that in humans is encoded by the *AURKA* gene. Aurora A is a member of a family of mitotic serine/threonine kinases associated with important processes during mitosis and meiosis. Aurora A is activated by one or more phosphorylations, and its activity peaks during the G2 phase to M phase transition in the cell cycle. Aurora A dysregulation has been associated with high occurrence of cancer.

SPECIFICATION SUMMARY

Antigen: Synthetic peptide representing a portion of the protein encoded within exons 5 and 6.

Accession no.: NP_003591.2

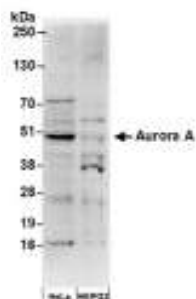
Gene ID: 6790

Host Species: Rabbit

Specificity: This antibody reacts with human Aurora kinase A, and the epitope recognized maps to a region between residues 75-125 of human Aurora kinase A. Based on 100% sequence identity this antibody is predicted to react with orangutan, gorilla, chimpanzee, and Northern white-cheeked gibbon.

APPLICATIONS

Immunoblotting: 1:5,000-1:20,000 dilution



Detection of human Aurora A in HeLa and HEPG2 whole cell lysates with catalog no. 13042 at 0.2ug/ml. Detection by chemiluminescence.

Immunoprecipitation: 1-5ug/mg lysate.

These are recommended concentrations. Endusers should determine optimal concentrations for their applications.

DILUTION INSTRUCTIONS

Dilute in PBS or medium that is identical to that used in the assay system.

STORAGE AND STABILITY

This antibody is stable at 2 - 8°C for one (1) year from date of receipt.

For in vitro investigational use only. Not intended for use in therapeutic or diagnostic procedures.