

BRD2 Polyclonal Antibody

ORDERING INFORMATION

Catalog No.: 13020

Size: 100ug IgG (1mg/ml) in Tris-citrate/phosphate buffer, pH 7-8.

BACKGROUND

BRD2 (bromodomain-containing 2) is a nuclear mitogen-activated kinase that plays a role in transcription of cell-cycle-regulated genes by functioning as an adapter protein that recruits E2F and chromatin remodeling factors to E2F response elements.

SPECIFICATION SUMMARY

Antigen: Synthetic peptide representing a portion of the protein between the putative nuclear localization signal and the ET domain

Accession no.: NP_005095.1

Gene ID: 6046.

Host Species: Goat

Stabilizers: None

Preservatives: 0.09% sodium azide

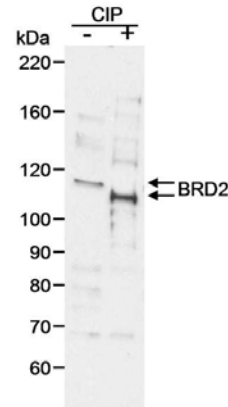
SPECIFICITY

This antibody reacts with human BRD2. The specific epitope is in the region between aa 550 and 600 of human BRD2. Based on 100% sequence identity, this antibody is predicted to react with Bovine, Rhesus Monkey, Gorilla, White-tufted-ear marmoset, Crab-eating macaque and Northern white-cheeked gibbon.

Antibody is affinity-purified with an epitope specific to BRD2 immobilized on solid support.

APPLICATIONS

Immunoblotting: 0.025 – 0.1 ug/ml.



Detection of human BRD2 in RIPA extract (10ug) of HeLa cells untreated (-) or treated (+) with calf intestinal phosphatase with #13020 at 0.05ug/ml.

DILUTION INSTRUCTIONS

Dilute in PBS or medium that is identical to that used in the assay system.

STORAGE AND STABILITY

This product is stable at 2 -8°C for 1 year.

For in vitro investigational use only. Not for use in therapeutic or diagnostic procedures.