

Manganese Superoxide Dismutase Polyclonal Antibody

ORDERING INFORMATION

Catalog No.: 13003

Size: 100ul (1mg/ml) in PBS pH 7.0, 50% glycerol, and 0.09% sodium azide. Affinity-purified on antigen.

BACKGROUND

Superoxide dismutase (SOD) is an endogenously produced intracellular enzyme that catalyzes the dismutation of the superoxide radical O_2^- to oxygen and hydrogen peroxide which are then metabolized to H_2O and O_2 by catalase and glutathione peroxidase. SODs play an important role in antioxidant defense mechanisms. Three different SOD isoenzymes are found in mammalian cells: SOD1, SOD2, and SOD3.

SPECIFICATION SUMMARY

Antigen: Human Mn SOD

Accession no.: P04179, NP_000627.2

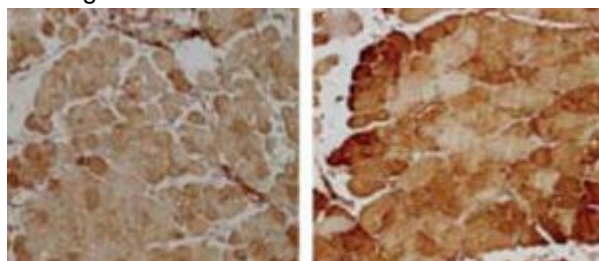
Host Species: Rabbit

Specificity: This antibody detects a 25kDa protein on SDS-PAGE immunoblots corresponding to the molecular mass of Mn SOD. This antibody recognizes human, monkey, mouse, rat, bovine, canine, porcine, hamster, guinea pig, rabbit, sheep, chicken, *Drosophila*, and *Xenopus* Mn SOD.

APPLICATIONS

Immunoblotting: use at 0.2-0.5ug/ml. Positive control: rat brain tissue extract

Immunohistochemistry: 1-10ug/ml



Detection of Mn SOD within the muscle fibers of LPS-injected rats.
(Left: Untreated, Right: treated with 3mmol/kg N-acetyl cysteine)

These are recommended concentrations. Endusers should determine optimal concentrations for their applications.

DILUTION INSTRUCTIONS

Dilute in PBS or medium that is identical to that used in the assay system.

STORAGE AND STABILITY

This antibody is stable for at least one (1) year at $-20^{\circ}C$. Avoid multiple freeze-thaw cycles.

For in vitro investigational use only. Not intended for use in therapeutic or diagnostic procedures.