

Anti-ASK1 Antibody

ORDERING INFORMATION

Catalog No.: 1151

Size: 100ug IgG in PBS, pH 7.4, purified by immunoaffinity chromatography.

BACKGROUND

A novel MAP kinase kinase kinase (MAPKKK) was recently identified and designated ASK1 (apoptosis signal-regulating kinase 1) and MAPKKK5. ASK1 activates two different subgroups of MAPKK, MKK4 and MKK6, which in turn activate c-jun N-terminal kinase (JNK) and p36 MAP kinase. ASK1/MAPKKK5 is activated by TNFR and Fas through the interaction with members of the TRAF family and Fas-associated protein Daxx. Overexpression of ASK1 induces apoptotic cell death. A catalytically inactive form of ASK1 inhibits TNF α -induced apoptosis. ASK1 is expressed in a variety of human and mouse tissues.

SPECIFICATION SUMMARY

Antigen: Peptide corresponding to aa 1356-1375 of human ASK1. This peptide sequence is different from that of mouse in the last two amino acids.

Host Species: Rabbit

Stabilizers: None

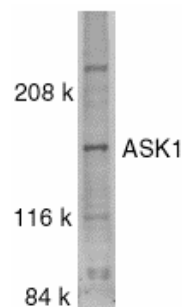
Preservatives: 0.02% sodium azide.

SPECIFICITY

This antibody recognizes human ASK1 (155kDa).

APPLICATIONS

Immunoblotting: use at 0.5-1ug/ml



Western blot analysis of ASK1 in SW1353 whole cell lysate with ASK1 antibody at 0.5 μ g/ml.

Immunocytochemistry: use at 10ug/ml.



Immunocytochemical staining of ASK1 in A431 cells with ASK1 antibody at 10 μ g/ml.

These are recommended concentrations.

Enduser should determine optimal concentration for their application.

Positive control: Whole cell lysate from SW1353 cells.

DILUTION INSTRUCTIONS

Dilute in PBS or medium which is identical to that used in the assay system.

STORAGE AND STABILITY

This antibody is stable for at least one (1) year at -20 $^{\circ}$ C. Avoid multiple freeze-thaw cycles.

For in vitro investigational use only. Not for use in therapeutic or diagnostic procedures.