

p21-Activating Kinase 4 Polyclonal Antibody

ORDERING INFORMATION

Catalog No.: 11201

Size: 50ug peptide immunogen affinity purified antibody in PBS containing 0.02% sodium azide.

BACKGROUND

p21-Activating Kinase 4 (PAK4) functions in reorganization of the actin cytoskeleton, filipodia formation, and cell migration. This protein has been shown to interact with the GTP-bound form of Cdc42 and weakly with RAC and to be stimulated by hepatocyte growth factor via phosphoinositide 3-kinase. Activated PAK4 activates the c-Jun N-terminal kinase pathway.

SPECIFICATION SUMMARY

Antigen: Synthetic peptide conjugated to KLH.

Host Species: Rabbit

Preservatives: 0.02% sodium azide

SPECIFICITY

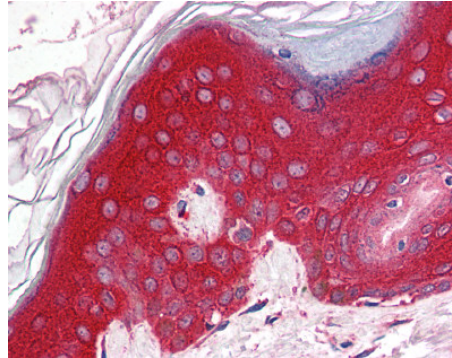
This antibody recognizes an epitope near the center of human PKA4.

For in vitro investigational use only. Not for use in therapeutic or diagnostic procedures.

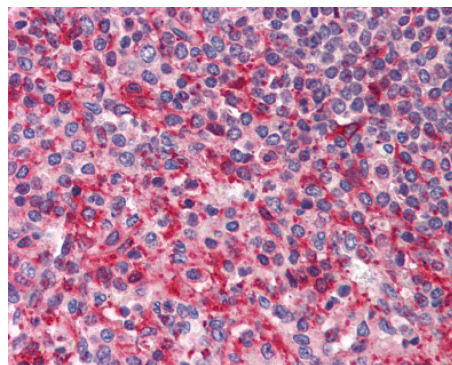
APPLICATIONS

Immunoblotting: Use at 1-2ug/ml.

Immunohistochemistry: Use at 2.5ug/ml.



Skin: Formalin-fixed, paraffin-embedded



Spleen: Formalin-fixed, paraffin-embedded

DILUTION INSTRUCTIONS

Dilute in PBS or medium which is identical to that used in the assay system.

STORAGE AND STABILITY

This antibody is stable at 4°C (short-term) and -70°C (long-term).