

## Aha1 Monoclonal Antibody

### ORDERING INFORMATION

**Catalog No.:** 11140 (clone 4H9-D7)  
**Size:** 100ug in PBS (1mg/ml), pH 7.4,  
50% glycerol, 0.09% sodium azide.  
Purified by Protein G affinity  
chromatography.

### BACKGROUND

Aha1 is a member of the Hsp90 co-chaperone family that appears to stimulate Hsp90 ATPase activity by competing with p23 and other co-chaperones for Hsp90 binding. Aha1 also interacts with HSPCA/Hsp90 and with the cytoplasmic tail of the vesicular stomatitis virus glycoproteins (VSV-G). Aha 1 is expressed in numerous tissues including brain, heart, skeletal muscle, and kidney and is present at low levels in liver and placenta.

### SPECIFICATION SUMMARY

**Antigen:** His-tagged recombinant human Aha1 (accession no. NP\_036243.1)

**Host Species:** Mouse

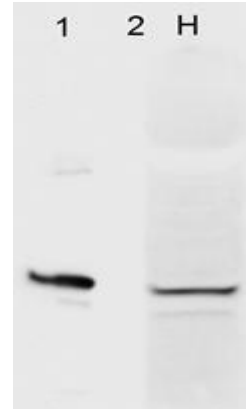
**Antibody Class:** IgG1

### SPECIFICITY

This antibody recognizes human and mouse Aha1 and cross-reacts with mouse Aha2.

### APPLICATIONS

*Immunoblotting:* use at 1ug/ml. A band of ~38kDa is detected. Band can appear as high as 45kDa.



Western blot detection of Aha1 in (1) HeLa cells and recombinant Aha1 (H) with #11140 at 1ug/ml.

*ELISA:* use at 1-10ug/ml with Aha1 on the solid phase.

These are recommended concentrations; enduser should determine optimal concentrations for their applications.

### DILUTION INSTRUCTIONS

Dilute in PBS or medium which is identical to that used in the assay system.

### STORAGE AND STABILITY

This antibody is stable for at least one (1) year at -20°C. Avoid repeated freeze-thaw cycles.

*For in vitro investigational use only. Not intended for diagnostic or therapeutic applications.*