

## Anti-PHAP (CT) Antibody

### ORDERING INFORMATION

**Catalog No.:** 11090

**Size:** 100ug IgG in PBS, pH 7.4, purified by immunoaffinity chromatography.

### BACKGROUND

The PHAP proteins (tumor suppressor putative HLA-DR associated proteins) are important regulators of mitochondrial apoptosis. PHAP facilitates apoptosome-mediated caspase-9 activation to stimulate the mitochondrial apoptosis pathway. In addition, PHAP opposes both *Ras*- and *myc*- mediated cell transformation.

### SPECIFICATION SUMMARY

**Antigen:** Synthetic peptide corresponding to amino acids near the carboxy terminus of human PHAP (accession no. P39687).

**Host Species:** Rabbit

**Stabilizers:** None

**Preservatives:** 0.02% sodium azide

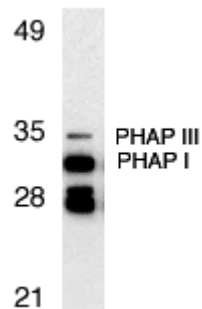
### SPECIFICITY

This antibody recognizes human, mouse and rat PHAP I (32kDa) and PHAP III (35kDa).

*For in vitro investigational use only. Not for use in therapeutic or diagnostic procedures.*

### APPLICATIONS

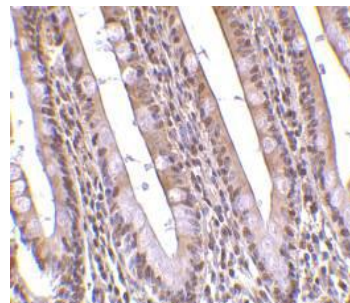
**Western Blot:** Use at 1ug/ml.



Western blot analysis of PHAP expression in Raji cell lysate with PHAP antibody at 1µg/ml. The two bands below PHAP I might be differently spliced isoforms of PHAP.

**Positive control:** Raji cell lysate

**Immunohistochemistry:** use at 10ug/ml.



Immunohistochemical staining of PHAP in human small intestine with PHAP antibody at 10µg/ml.

These are recommended concentrations. Enduser should determine optimal concentrations for their applications.

### DILUTION INSTRUCTIONS

Dilute in PBS or medium which is identical to that used in the assay system.

### STORAGE AND STABILITY

This antibody is stable for at least one (1) year at -20°C. Avoid multiple freeze-thaw cycles.