

Anti-PHAP I (CT) Antibody

ORDERING INFORMATION

Catalog No.: 11088

Size: 100ug IgG in PBS, pH 7.4, purified by immunoaffinity chromatography.

SPECIFICATION SUMMARY

Antigen: A synthetic peptide corresponding to amino acids at the carboxy terminus of human PHAP (accession no. P39687).

Host Species: Rabbit

Stabilizers: None

Preservatives: 0.02% sodium azide

BACKGROUND

The PHAP proteins (tumor suppressor putative HLA-DR associated proteins) are important regulators of mitochondrial apoptosis. PHAP facilitates apoptosome-mediated caspase-9 activation to stimulate the mitochondrial apoptosis pathway. In addition, PHAP opposes both *Ras*- and *myc*- mediated cell transformation.

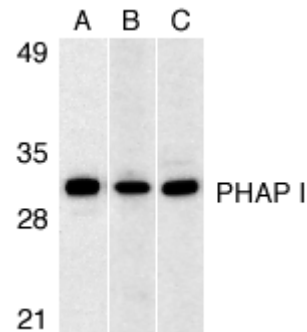
SPECIFICITY

This antibody recognizes human, mouse and rat PHAP I (32kDa), and does not cross-react with PHAP I2a or PHAP III.

For in vitro investigational use only. Not for use in therapeutic or diagnostic procedures.

APPLICATIONS

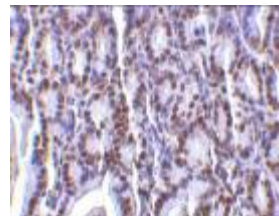
Immunoblotting: Use at 1ug/ml.



Western blot analysis of PHAP I expression in human Raji cell (A), mouse (B) and rat (C) testis tissue lysates with PHAP I antibody at 1µg/ml.

Positive control: Raji cell lysate.

Immunohistochemistry: use at 2ug/ml.



Immunohistochemical staining of PHAP I in mouse small intestine with PHAP I antibody at 2µg/ml.

These are recommended concentrations. Enduser should determine optimal concentrations for their applications.

DILUTION INSTRUCTIONS

Dilute in PBS or medium which is identical to that used in the assay system.

STORAGE AND STABILITY

This antibody is stable for at least one (1) year at -20°C. Avoid multiple freeze-thaw cycles.