

Anti-PHAP (NT) Antibody

ORDERING INFORMATION

Catalog No.: 11086

Size: 100ug IgG in PBS, pH 7.4, purified by immunoaffinity chromatography.

SPECIFICATION SUMMARY

Antigen: Synthetic peptide corresponding to amino acids near the amino terminus of human PHAP (accession no. P39687).

Host Species: Rabbit

Stabilizers: None

Preservatives: 0.02% sodium azide

BACKGROUND

The PHAP proteins (tumor suppressor putative HLA-DR associated proteins) are important regulators of mitochondrial apoptosis. PHAP facilitates apoptosome-mediated caspase-9 activation to stimulate the mitochondrial apoptosis pathway. In addition, PHAP opposes both *Ras*- and *myc*- mediated cell transformation.

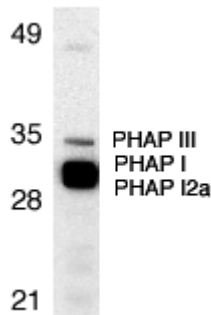
SPECIFICITY

This antibody recognizes all three isoforms of human, mouse and rat PHAP, including PHAP I (32kDa), PHAP I2a, and PHAP III (35kDa).

For in vitro investigational use only. Not for use in therapeutic or diagnostic procedures.

APPLICATIONS

Immunoblotting: Use at 1ug/ml.



Western blot analysis of PHAP in Raji cell lysate with PHAP antibody at 1µg/ml. The wide and strong band below PHAP III is a doublet composed of PHAP I (upper) and PHAP I2a (lower).

Positive control: Raji cell lysate.

Immunocytochemistry: use at 1ug/ml.



Immunocytochemical staining of PHAP in Raji cells with PHAP antibody at 1µg/ml.

These are recommended concentrations. Enduser should determine optimal concentrations for their applications.

DILUTION INSTRUCTIONS

Dilute in PBS or medium which is identical to that used in the assay system.

STORAGE AND STABILITY

This antibody is stable for at least one (1) year at -20oC. Avoid multiple freeze-thaw cycles.