

## Anti-Ras Antibody

### ORDERING INFORMATION

Catalog Number	Quantity
11068-50	50ug
11068-200	200ug

### BACKGROUND

Monomeric G-protein Ras functions as a molecular switch linking receptor and nonreceptor tyrosine kinase activation to a number of downstream signaling pathways. Oncogenic mutations, which occur in approximately 30% of all cases of human cancer, lead to the stimulation of proliferation and the inhibition of apoptosis.

### SPECIFICATION SUMMARY

**Antigen:** A 13-residue synthetic peptide from the effector binding loop of H-, K-, and N-Ras, residues 31-43 (EYDPTIEDSYRKQ((C).

**Host Species:** Rabbit

**Format:** Affinity Purified

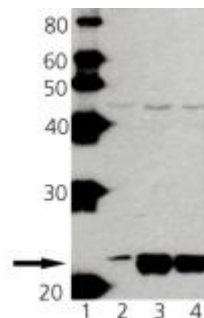
**Buffer:** PBS, pH 7.2, 50% glycerol, 0.09% sodium azide.

### SPECIFICITY

This antibody recognizes human, mouse, rat and bovine Ras. It detects a band of 21-23kDa by Western blot.

### APPLICATIONS

*Immunoblotting:* use at 1–4ug/ml.



Western blot analysis of Ras: Lane 1: MW marker, Lane 2: HeLa lysate, Mouse Brain Lysate, Rat Brain Lysate.

*Positive control:* HeLa cell lysate.

These are recommended concentrations. Enduser should determine optimal concentrations for their applications.

### DILUTION INSTRUCTIONS

Dilute in PBS or media which is identical to that used in the assay system.

### STORAGE AND STABILITY

This product is stable for at least one (1) year at -20°C. Avoid multiple freeze-thaw cycles.

*For in vitro investigational use only. Not for use in therapeutic or diagnostic procedures.*