

## SAPK $\alpha$ (Stress-Activated c-Jun Protein Kinase $\alpha$ ) Polyclonal Antibody

### ORDERING INFORMATION

Catalog No.	Size
11050-25	25ul

**Format:** Whole rabbit serum.

### BACKGROUND

The stress-activated protein kinases alpha and gamma (SAPK alpha and gamma), also known as c-Jun NH2-terminal kinases 1 and 2 (Jnk1/2) are serine/ threonine protein kinases belonging to the MAP kinase family. Extracellular stimuli leading to cell stress include inflammatory cytokines (via Rho and Rac), growth factors, protein synthesis inhibitors and osmotic stress. Both Jnk1 and Jnk2 must be dually phosphorylated in the activation loop, at threonine 183 and tyrosine 185, to achieve full enzymatic activity.

### SPECIFICATION SUMMARY

**Antigen:** Synthetic peptide corresponding to aa 1-16 of rat SAPK $\alpha$  (MSDSKSDGQFYSVQVA (C)).

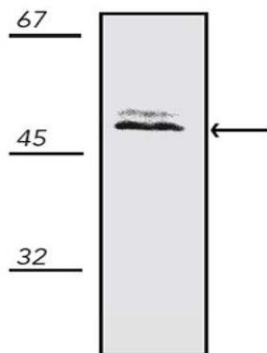
**Accession no.:** P49186

**Host Species:** Rabbit

**Specificity:** This antibody recognizes human, mouse, and rat SAPK $\alpha$  (55kDa).

### APPLICATIONS

**Immunoblotting:** use at a dilution of 1:500. This is a recommended dilution. Endusers should determine optimal dilution for their applications.



Detection of SAPK $\alpha$  in mouse brain tissue extract with SAPK $\alpha$  antibody diluted 1:500.

### DILUTION INSTRUCTIONS

Dilute in PBS or medium which is identical to that used in the assay system.

### STORAGE AND STABILITY

This antibody is stable for at least one (1) year at -20°C. Avoid multiple freeze-thaw cycles.

*For in vitro investigational use only. Not for use in therapeutic or diagnostic procedures.*