

Anti-Bmf (NT) Antibody

ORDERING INFORMATION

Catalog No.: 11002

Size: 100ug IgG in PBS, pH 7.4, purified by immunoaffinity chromatography.

SPECIFICATION SUMMARY

Antigen: Peptide corresponding to aa 2-14 of human Bmf (accession no. NP_277038).

Host Species: Rabbit

Stabilizers: None

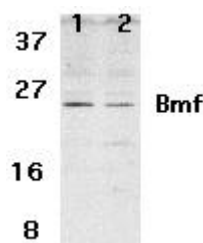
Preservatives: 0.02% sodium azide

SPECIFICITY

This antibody recognizes an epitope at the N-terminus of human Bmf (Bcl-2-Modifying Factor), a novel BH3-only protein. In healthy cells, Bmf associates with the dynein light chain 2 component of the myosin V motors and is sequestered by the cell's actin cytoskeleton. Disruption of the actin cytoskeleton, either by depolymerization of actin filaments or by detachment of cells from the extracellular matrix, triggers release and activation of Bmf, initiating the downstream apoptotic program. Bmf is constitutively expressed in many tissues.

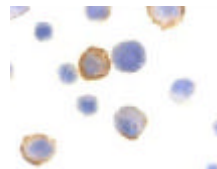
APPLICATIONS

Immunoblotting: use at 2ug/ml. A band of 25kDa is detected.



Western blot analysis of Bmf expression in human HepG2 (lane 1) and 293 (lane 2) cell lysates with Bmf antibody at 2µg/ml.

Immunocytochemistry: use at 10ug/ml.



Immunocytochemical staining of Bmf in HeLa cells with Bmf antibody at 10µg/ml.

These are recommended concentrations.

Enduser should determine optimal concentration for their application.

Positive control: HepG2 or 293 cell lysates.

DILUTION INSTRUCTIONS

Dilute in PBS or medium which is identical to that used in the assay system.

STORAGE AND STABILITY

This antibody is stable for at least one (1) year at -20°C. Avoid multiple freeze-thaw cycles.

For in vitro investigational use only. Not for use in therapeutic or diagnostic procedures.