

***Legionella pneumophila* serogroup 1 LPS Monoclonal Antibody**

ORDERING INFORMATION

Catalog No.: 15901

Size/Format: 100ug (0.5mg/ml) Protein
A+G-purified antibody in PBS, 0.02%
sodium azide, 50% glycerol, 0.1% BSA.

BACKGROUND

Legionella pneumophila are Gram-negative aerobic coccobacilli isolated from natural and artificial fresh water reservoirs. The outer membrane of *L. pneumophila* is comprised of a unique lipopolysaccharide (LPS) which is less endotoxic than enterobacterial LPS. Serogroups of *L. pneumophila* are classified based on O-antigen determinants of their cell wall side chains. *L. pneumophila* is pathogenic for humans, and it has no known soil or animal sources. It is responsible for more than 98% of the cases of Legionnaires' Disease, and about 95% of cases are due to serogroup 1. It has been isolated from numerous environmental sites as well as from human lung tissue, respiratory secretions, blood, and urine.

SPECIFICATION SUMMARY

Antigen: *L. pneumophila* serogroup 1 LPS conjugated to BSA.

Host Species: Mouse

Clone no.: 4CE4

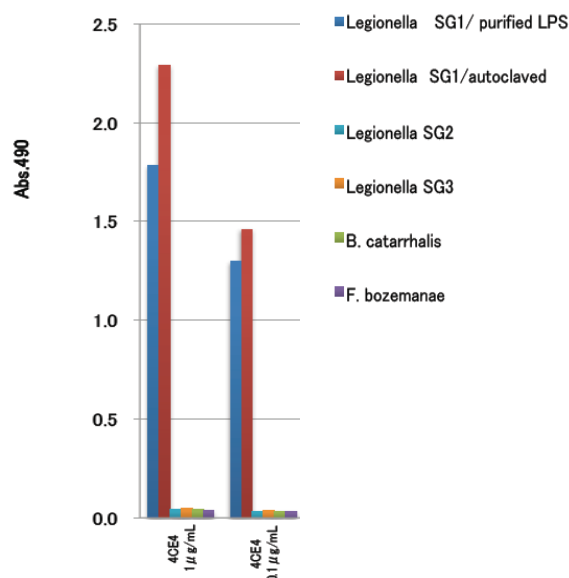
Antibody Class: IgG1

SPECIFICITY

This antibody recognizes LPS of *L. pneumophila* serogroup 1 (SG1). It does not react with serogroups 2-9, *Legionella bozemanii*, or *Branhamella catarrhalis*.

APPLICATIONS

ELISA: use at 0.1-1.0ug/ml with LPS on the solid phase at 5ug/ml. These are recommended concentrations. Endusers should determine optimal concentrations for their applications.



DILUTION INSTRUCTIONS

Dilute in PBS or medium that is identical to that used in the assay system.

STORAGE AND STABILITY

This antibody is stable for at least one (1) year if stored at -20°C. Store product in appropriate aliquots to avoid multiple freeze-thaw cycles.

For in vitro investigational use only. Not for use in therapeutic or diagnostic procedures.