

Glutathione Reductase Monoclonal Antibodies

ORDERING INFORMATION

Catalog Nos.: 13901 (clone 2A2-1B7) and 13902 (clone 2A4-1G9)

Format: 200ug/clone in phosphate-buffered saline, pH 7.4

BACKGROUND

Glutathione reductase, also known as glutathione-disulfide reductase, is an enzyme that in humans is encoded by the *GSR* gene. Glutathione reductase catalyzes the reduction of glutathione disulfide to the sulfhydryl form glutathione (GSH), which is a critical molecule in resisting oxidative stress and maintaining the reducing environment of the cell. The importance of the glutathione pathway and enzymes that affect it is gaining an increased level of attention. Although glutathione reductase has been an attractive target for many pharmaceuticals, there have been no successful glutathione reductase related therapeutic compounds created to date.

SPECIFICATION SUMMARY

Antigen: Recombinant human glutathione reductase purified from *E. coli* expressing the human glutathione reductase gene (aa 44-522).

Accession no.: P00390, NP_000628

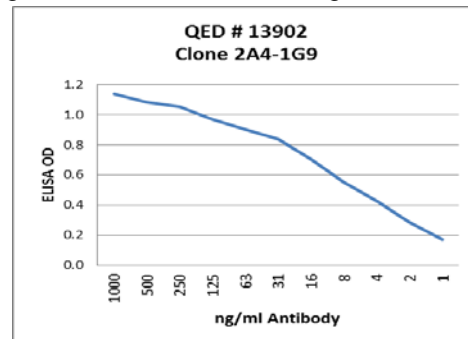
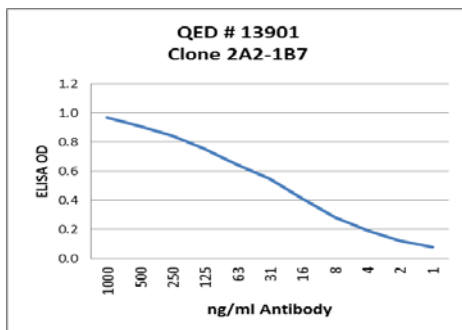
Host Species: Mouse

Antibody Class: IgG1k

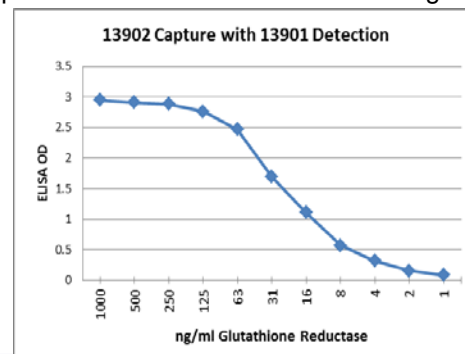
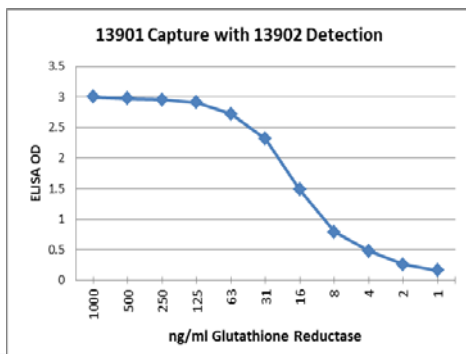
Specificity: These antibodies recognize human glutathione reductase. They do not cross-react with yeast glutathione reductase.

APPLICATIONS

ELISA: Titration of glutathione reductase MABs with glutathione reductase at 3ug/ml on the wells.

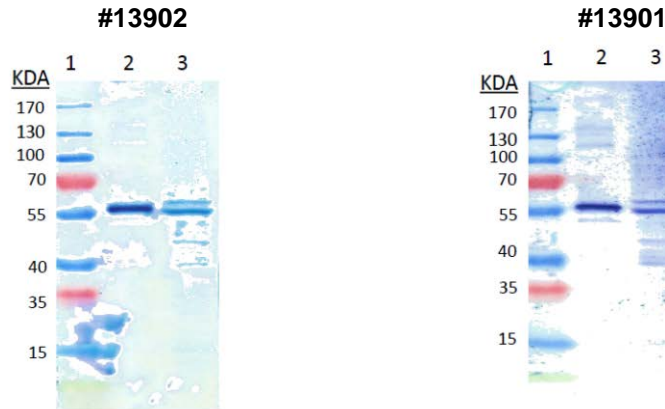


ELISA Pairs: Both of these antibodies function as capture and detection antibodies at 1ug/ml.



Glutathione Reductase Monoclonal Antibodies

Immunoblotting: use at 0.5-1.0ug/ml. A band of ~57kDa is detected.



Lane 1: mw standards
Lane 2: Recombinant human glutathione reductase
Lane 3: Lysate of glutathione reductase-transfected 293T cells

These are recommended concentrations. Endusers should determine optimal concentrations for their applications.

DILUTION INSTRUCTIONS

Dilute in PBS or medium that is identical to that used in the assay system.

STORAGE AND STABILITY

These antibodies are stable for at least one (1) year at -20°C. Store product in appropriate aliquots to avoid multiple freeze-thaw cycles.

For in vitro investigational use only. Not intended for therapeutic or diagnostic procedures.