

NEW

CE 0483

## recomLine Chlamydia IgG

## recomLine Chlamydia IgA

Strip-Immunoassay with antigens produced by recombinant techniques for the detection of IgG and IgA antibodies against *Chlamydia trachomatis*, *Chlamydia pneumoniae* and *Chlamydia psittaci*.

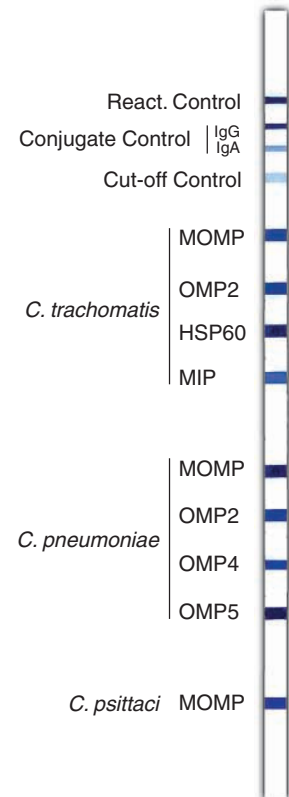
*Chlamydia trachomatis*, *Chlamydia pneumoniae* and *Chlamydia psittaci* are worldwide spread bacteria of important clinical and epidemiological relevance.

*Chlamydia trachomatis* is worldwide one of the most causative agents of sexually transmitted diseases with an incidence of about 50 million diseases. Besides the urogenital tract, eyes and the respiratory tract of newborns can be infected by *Chlamydia trachomatis*. The clinical pictures involve primarily urethritis, Trachoma, Lymphogranuloma venereum and can finally cause sterility, conjunctivitis and reactive arthritis.

The importance of the 1986 identified bacterium *Chlamydia pneumoniae* is shown by a serological prevalence of about 50%. *C. pneumoniae* infects mainly the respiratory tract and causes bronchitis, pneumonia and sinusitis amongst others.

*Chlamydia psittaci* is the causative agent of ornithosis, a rare anthroozoonosis in Germany. *Chlamydia psittaci* infects usually only persons which have contact to pet birds and farmbirds.

The recomLine Chlamydia is the only test system, which allows the detection of the immune response against all three humano pathogen Chlamydia-species in one step and on one strip. Primarily it has been designed as a confirmatory assay but it can also be applied as a screening assay. The recomLine Chlamydia comprises of different recombinant, species specific antigens sprayed onto nitrocellulose strips so that it is possible to detect IgG and IgA antibodies against immunodominant antigens of *C. trachomatis*, *C. pneumoniae* and *C. psittaci*.



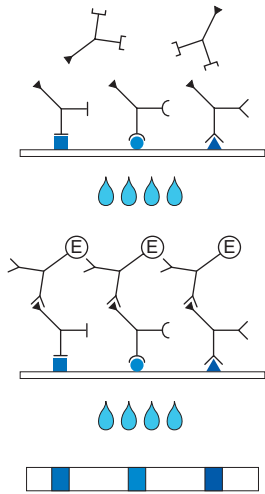
### Product advantages

- **Recombinant antigens**, therefore:
  - High sensitivity and specificity
  - Easy and clear interpretation due to easy to read bands
- Separate detection of IgG and IgA antibodies possible
- Safe evaluation due to strip specific controls (cut-off and conjugate control)
- Easy test procedure; automation possible
- Test procedure is identical to other MIKROGEN strip tests
- CE label: The recomLine Chlamydia tests meet the high standard of the EC directive 98/79/EC on in vitro diagnostic medical devices

### Recombinant Chlamydia antigens

Antigen	Abbreviation	Molecular weight [kDa]		
		<i>C. trachomatis</i>	<i>C. pneumoniae</i>	<i>C. psittaci</i>
Major Outer Membrane Protein	MOMP (OMP A)	40	43	43
Outer Membrane Protein 2	OMP2	56	56	
Heat Shock Protein 60	HSP60	58		
Macrophage Infectivity Potentiator	MIP	25		
Outer Membrane Protein 4	OMP4		100	
Outer Membrane Protein 5	OMP5		94	

## Test Principle and Procedure



**1<sup>st</sup>. Incubation:** A test strip loaded with Chlamydia antigens is incubated with diluted serum or plasma in a dish for **1 h**.

*Wash 3 times*

**2<sup>nd</sup>. Incubation:** Peroxidase conjugated anti-human antibodies (IgG or IgA specific) are added. Incubate for **45 min**.

*Wash 3 times*

**3<sup>rd</sup>. Incubation:** **5 - 10 minutes** after addition of the coloring solution, insoluble colored bands develop at the sites on the test strips occupied by antibodies.

## Examples

Determination of the immunostatus of different patients after infection with *Chlamydia trachomatis*, *Chlamydia pneumoniae* and *Chlamydia psittaci* in one onset.

<i>C. trachomatis</i>				<i>C. pneumoniae</i>				<i>C. psittaci</i>		Ig type	<i>C. trachomatis</i>					<i>C. pneumoniae</i>				<i>C. psittaci</i>		Interpretation
MOMP	OMP2	HSP60	MIP	MOMP	OMP2	OMP4	OMP5	MOMP	MOMP		OMP2	OMP4	OMP5	Result	MOMP	OMP2	OMP4	OMP5	Result	MOMP	Result	
+	+	+	+	+	+	-	-	-	+	+	+	-	pos.	+	+	-	-	pos.	-	neg.	<i>Chlamydia trachomatis</i> and former <i>C. pneumoniae</i> inf.	
+	+	+	+	+	+	-	-	-	+	+	+	-	pos.	+	+	-	-	neg.	+	neg.	<i>Chlamydia trachomatis</i> infection	
-	-	-	-	-	-	-	-	-	+	+	+	-	neg.	+	+	-	-	pos.	-	neg.	<i>Chlamydia pneumoniae</i> infection	
-	-	-	-	-	-	-	-	-	+	+	+	-	neg.	+	+	-	-	pos.	-	neg.	<i>Chlamydia pneumoniae</i> infection	
+	+	+	+	+	+	-	-	-	+	+	+	-	neg.	+	+	+	+	pos.	+	pos.	<i>Chlamydia psittaci</i> and former <i>C. pneumoniae</i> inf.	

## Storage and Shelf Life

At 4 °C 12 months from the time of production

## Commercial Product

Article No. 6172 **recomLine Chlamydia IgG**  
Reagents for 25 determinations

Article No. 6173 **recomLine Chlamydia IgA**  
Reagents for 25 determinations