

# Rubella Virus

CE 0483

## recomBlot Rubella IgG

*Immunoblot test with antigens produced by recombinant techniques for the detection of IgG antibodies against the Rubella virus.*

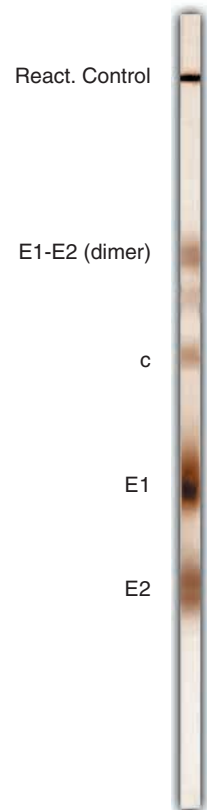
*Differentiation test between rubella immunity and rubella primary infection.*

In spite of the availability of a protective inoculation against the Rubella virus, about 200 children with rubella syndrome are born in Germany every year. Therefore, it is of great importance that the immune status for the rubella virus is determined and monitored before and during pregnancy.

Problems can arise in the serological differentiation between past infection or inoculation and an acute primary infection. The reasons for this are unclear IgG results and especially weak IgM titers, which make the exclusion of a fresh infection difficult.

recomBlot Rubella IgG was developed for these diagnostic situations. The test uses recombinant Rubella specific structural proteins which are separated electrophoretically and transferred to a nitrocellulose membrane (Western blot). Thus, an evaluation of reactivities with individual antigens is possible.

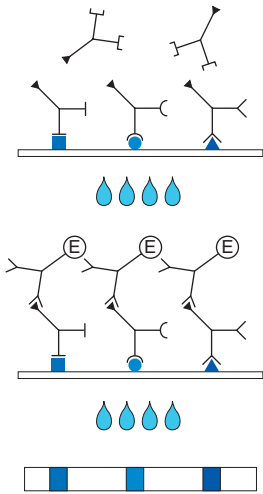
As a rule, IgG antibodies against the E2 antigen are found months after primary infection. Consequently, the determination of this antibody specificity can provide additional information for the evaluation of doubtful serological results.



### Product Advantages

- **Recombinant antigens**, therefore
  - High sensitivity and specificity
  - Easy and clear interpretation through easy to read bands
- Easy test procedure; automation possible
- Safe evaluation through control sera and control strip
- **Optimal presentation of rubella structural proteins E1, E2 and nucleocapsid protein c by use of rubella like particles (RLPs)**
- **CE certification** by notified body (replace the former PEI accreditation)

## ■ Test Principle and Procedure



**1<sup>st</sup> Incubation:** A test strip loaded with Rubella antigens is incubated with diluted serum or plasma in a dish for **10-16 h**.

*Wash 4 times*

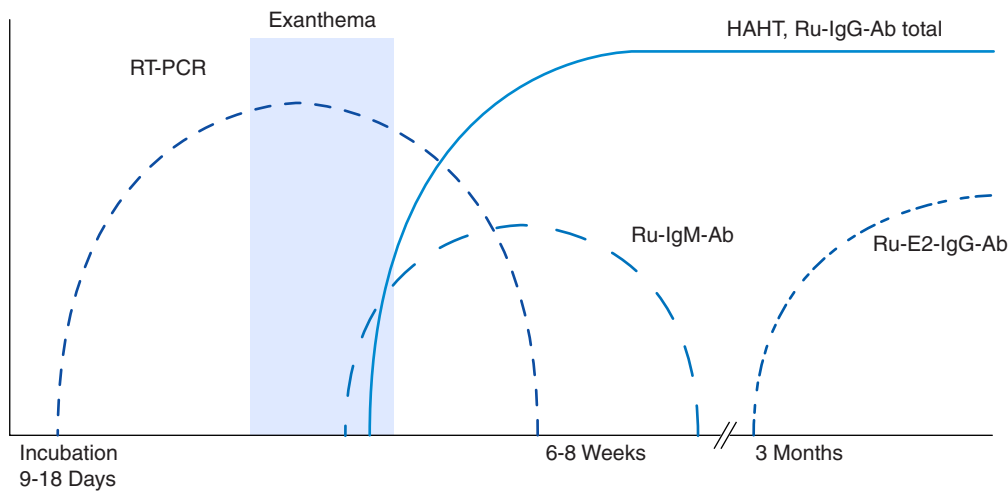
**2<sup>nd</sup> Incubation:** Peroxidase conjugated anti-human antibodies (IgG specific) are added. Incubate for **1 h**.

*Wash 4 times*

**3<sup>rd</sup> Incubation:** **5 - 10 minutes** after addition of the coloring solution, insoluble colored bands develop at the sites on the test strips occupied by antibodies.

## ■ Rubella markers

(according to B. Pustowitz)



## ■ Storage and Shelf Life

At 4 °C nine months from the time of production

## ■ Commercial Product

Article No. 4902 **recomBlot Rubella IgG**  
Reagents for 20 determinations